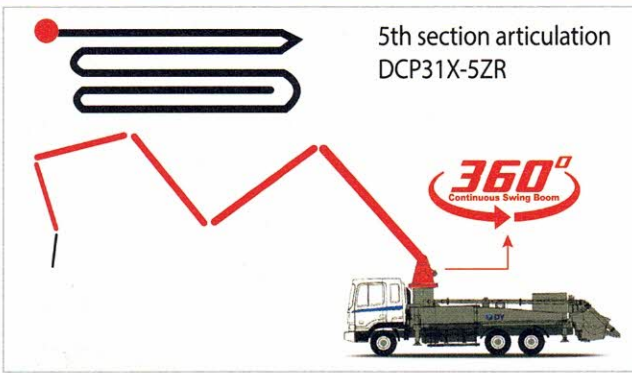
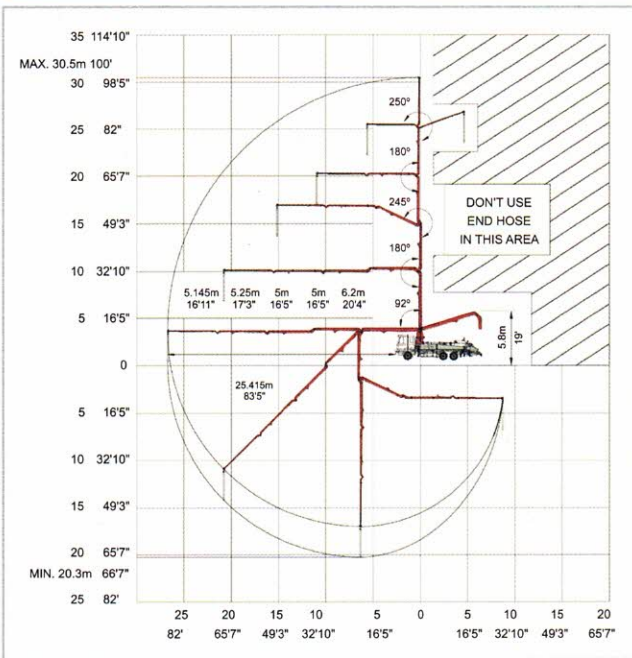


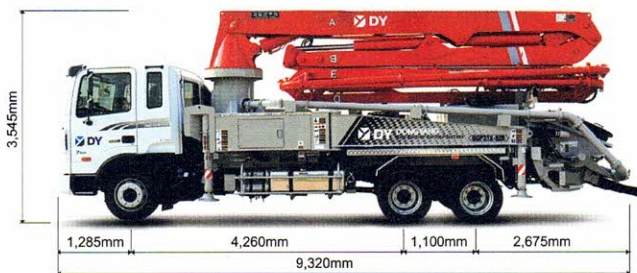
## Boom Type : ZR-Type 5 Section



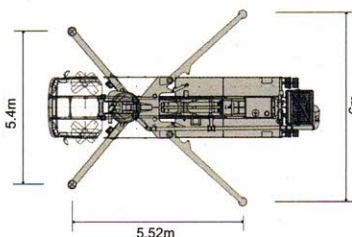
## WORKING RANGE



## DIMENSION



## OUTRIGGER



## Truck-Mounted Specifications

| DCP31X-5ZR           |           |           |
|----------------------|-----------|-----------|
| Length               | 9.320 m   | 30' 7"    |
| Width                | 2.365 m   | 7' 9"     |
| Height               | 3.545 m   | 12' 0"    |
| Wheelbase            | 5.360 m   | 17' 7"    |
| Front axle weight    | 4,260 kg  | 9,392 lb  |
| Rear axle weight     | 14,230 kg | 31,372 lb |
| Approx. total weight | 17,925 kg | 39,518 lb |

## Boom Specifications • Roll-and-Z-Fold Design

| DCP31X-5ZR                |          |         |
|---------------------------|----------|---------|
| Vertical reach            | 30.5 m   | 100' 1" |
| Horizontal reach          | 26.7 m   | 87' 7"  |
| Reach from front of truck | 25.415 m | 83' 5"  |
| Reach depth               | 20.3 m   | 66' 7"  |
| Unfolding height          | 5.8 m    | 19'     |

## Boom Section

|                          |      |
|--------------------------|------|
| 1st section articulation | 92°  |
| 2nd section articulation | 180° |
| 3rd section articulation | 245° |
| 4th section articulation | 180° |
| 5th section articulation | 250° |

|                    |         |         |
|--------------------|---------|---------|
| 1st section length | 6.2 m   | 20' 4"  |
| 2nd section length | 5 m     | 16' 5"  |
| 3rd section length | 5 m     | 16' 5"  |
| 4th section length | 5.25 m  | 17' 3"  |
| 5th section length | 5.145 m | 16' 11" |

## General Specs

|                                    |        |        |
|------------------------------------|--------|--------|
| Pipeline size (ID) metric ends     | 105 mm | 4"     |
| Rotation                           | ∞      |        |
| End hose — length                  | 3.0 m  | 9' 10" |
| End hose — diameter                | 105 mm | 4"     |
| Outrigger spread L - R             | 5.4 m  | 17' 9" |
| Swing out, telescope & extend down |        |        |
| Outrigger spread                   | 6 m    | 19' 8" |
| Swing out & extend down            |        |        |

## Pump Specifications

|                                 |              |                       |                         |
|---------------------------------|--------------|-----------------------|-------------------------|
| Output                          | rod side     | 90 m <sup>3</sup> /hr | 118 yd <sup>3</sup> /hr |
|                                 | piston side  | 60 m <sup>3</sup> /hr | 78 yd <sup>3</sup> /hr  |
| Pressure                        | rod side     | 71 bar                | 1,011 psi               |
|                                 | piston side  | 106 bar               | 1,507 psi               |
| Material cylinder diameter      | 200 mm       | 7.9"                  |                         |
| Stroke length                   | 1,600 mm     | 5' 24"                |                         |
| Max strokes                     | per minute   | 1 minute              |                         |
|                                 | rod side     | 29                    |                         |
|                                 | piston side  | 20                    |                         |
| Volume control                  | Zero to full |                       |                         |
| Vibrator Standard               | Option       |                       |                         |
| Hard-chromed material cylinders | Standard     |                       |                         |
| Hydraulic system                | Closed-loop  |                       |                         |
| Hydraulic system pressure       | 350 bar      | 5,075 psi             |                         |
| Differential cylinder diameter  | 110 mm       | 4.3"                  |                         |
| Rod diameter                    | 63 mm        | 2.5"                  |                         |
| Maximum size aggregate          | 60 mm        | 2.4"                  |                         |