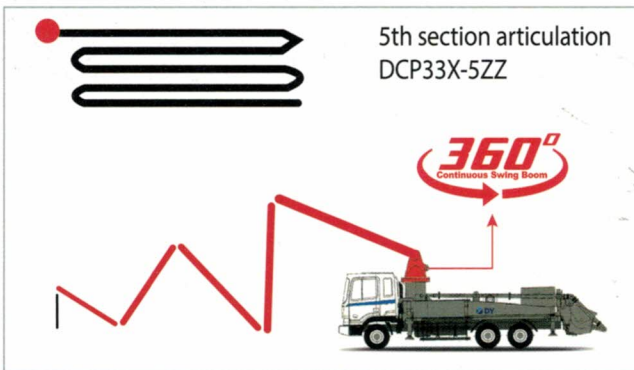
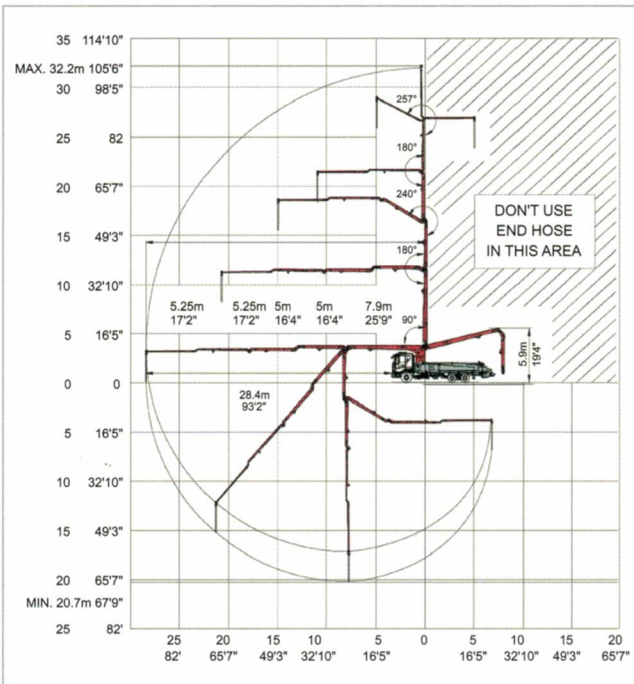


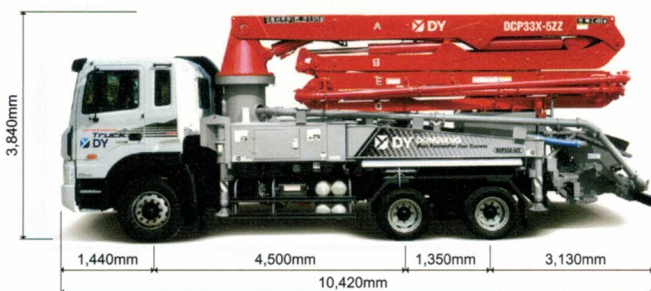
Boom Type : ZZ-Type 5 Section



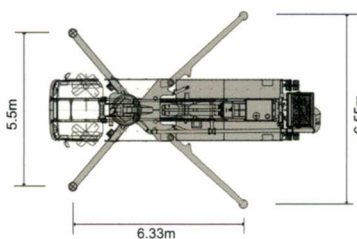
WORKING RANGE



DIMENSION



OUTRIGGER



Truck-Mounted Specifications

DCP33X-5ZZ		
Length	10,420 m	34' 2"
Width	2,365 m	7' 9"
Height	3.84 m	12' 7"
Wheelbase	4,500 m	14' 9"
Front axle weight	7,095 kg	15,641 lb
Rear axle weight	17,045 kg	37,577 lb
Approx. total weight	24,140 kg	53,219 lb

Boom Specifications • Roll-and-Z-Fold Design

DCP33X-5ZZ		
Vertical reach	32.2 m	105' 7"
Horizontal reach	27.9 m	91' 6"
Reach from front of truck	25.16 m	82' 7"
Reach depth	20.6 m	67' 7"
Unfolding height	5.8 m	19'

Boom Section

1st section articulation	90°
2nd section articulation	180°
3rd section articulation	245°
4th section articulation	180°
5th section articulation	255°

1st section length	7.9 m	25' 11"
2nd section length	5 m	16' 5"
3rd section length	5 m	16' 5"
4th section length	5.25 m	17' 3"
5th section length	5.25 m	17' 3"

General Specs

Pipeline size (ID) metric ends	125 mm	5"
Rotation		∞
End hose — length	3.5 m	11' 6"
End hose — diameter	125 mm	5"
Outrigger spread L - R	5.5 m	18' 1"
Swing out, telescope & extend down		
Outrigger spread	6.5 m	21' 4"
Swing out & extend down		

Pump Specifications

Output	rod side	160 m ³ /hr	209 yd ³ /hr
	piston side	108 m ³ /hr	141 yd ³ /hr
Pressure	rod side	87 bar	1,262 psi
	piston side	130 bar	1,886 psi
Material cylinder diameter		230 mm	9"
Stroke length		2,100 mm	6' 11"
Max strokes	per minute		1 minute
	rod side		31
	piston side		21
Volume control			Zero to full
Vibrator Standard			Option
Hard-chromed material cylinders			Standard
Hydraulic system			Closed-loop
Hydraulic system pressure		350 bar	5,075 psi
Differential cylinder diameter		140 mm	5.5"
Rod diameter		80 mm	3"
Maximum size aggregate		60 mm	2.4"