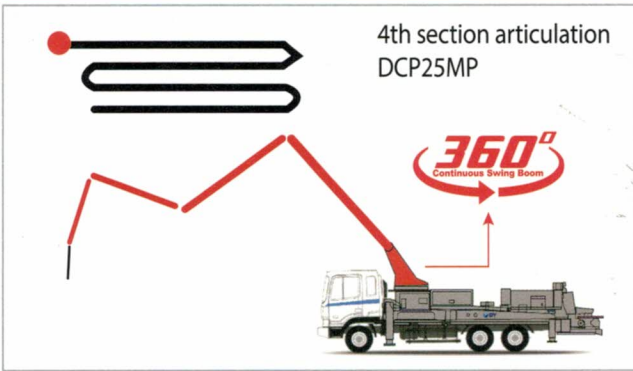
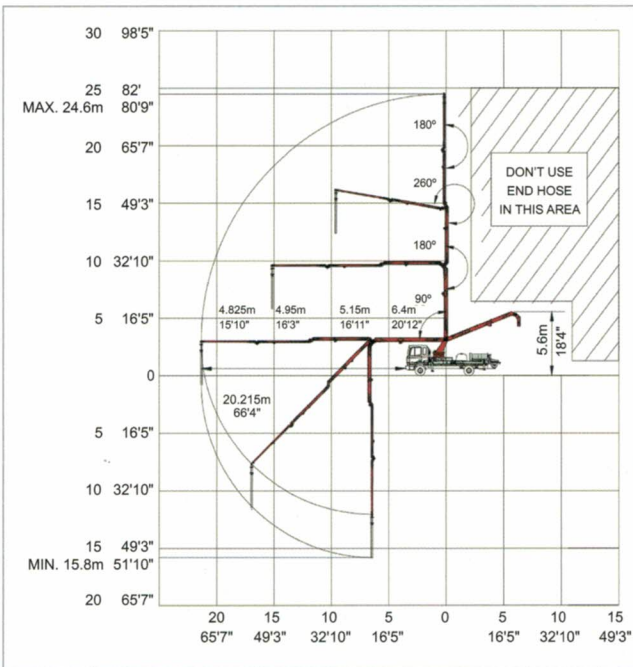


Boom Type : Z-Type 4 Section



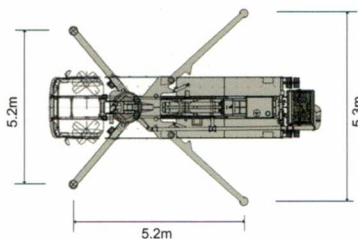
WORKING RANGE



DIMENSION



OUTRIGGER



Truck-Mounted Specifications

	DCP25MP	
Length	8.800 m	28' 10"
Width	2.315 m	7' 7"
Height	3.330 m	10' 11"
Wheelbase	4.260 m	13' 12"
Front axle weight	3,970 kg	8,752 lb
Rear axle weight	7,845 kg	17,245 lb
Approx. total weight	11,815 kg	26,047 lb

Boom Specifications • Roll-and-Z-Fold Design

Height & Reach	DCP25MP	
Vertical reach	24.6 m	80' 9"
Horizontal reach	21.5 m	70' 6"
Reach from front of truck	20.215 m	66' 4"
Reach depth	15.8 m	51' 10"
Unfolding height	5.6 m	18' 4"

Boom Section

1st section articulation	90°
2nd section articulation	180°
3rd section articulation	260°
4th section articulation	180°
5th section articulation	

1st section length	6.4 m	20' 12"
2nd section length	5.15 m	16' 11"
3rd section length	4.95 m	16' 3"
4th section length	4.825 m	15' 10"
5th section length		

General Specs

Pipeline size (ID) metric ends	105 mm	4"
Rotation		∞
End hose — length	3.0 m	9' 10"
End hose — diameter	105 mm	4"
Outrigger spread L - R	5.2 m	17' 1"
Swing out, telescope & extend down		
Outrigger spread	5.3 m	17' 5"
Swing out & extend down		

Pump Specifications

Output	rod side	70 m ³ /hr	92 yd ³ /hr
	piston side	47 m ³ /hr	61 yd ³ /hr
Pressure	rod side	71 bar	1,011 psi
	piston side	106 bar	1,507 psi
Material cylinder diameter		200 mm	7.9"
Stroke length		1,400 mm	4' 7"
Max strokes	per minute		1 minute
	rod side		26
	piston side		18
Volume control			Zero to full
Vibrator Standard			Option
Hard-chromed material cylinders			Standard
Hydraulic system			Closed-loop
Hydraulic system pressure		350 bar	5,075 psi
Differential cylinder diameter		110 mm	4.3"
Rod diameter		63 mm	2.5"
Maximum size aggregate		60 mm	2.4"